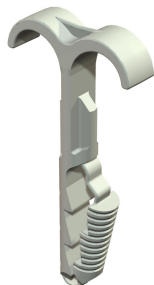


# Technical data sheet

## Double push-fit clip

Item number: 2197863



These push-fit clips are used when installing cables and pipes on walls and ceilings and when running flexible pipes on concrete and in the screed. The double push-fit clips can be used instead of nail clips in concrete and aerated concrete. The advantage of the push-fit clips is that they only have to be pushed into the drilled hole. Anchors and bolts are not needed.



PA

Polyamide

### Master data

Item number	2197863
Type	1974 2X12-25
Description 1	Plug-in clip
Description 2	double
Manufacturer	OBO
Dimension	12-25mm
Colour	Light grey; RAL 7035
Material	Polyamide
Smallest sales unit	100
Unit of quantity	Piece
Weight	0.282 kg
Weight unit	kg/100 pc.
CO Footprint (GWP) Cradle-to-Gate	0,014 kg COe / 1 Piece

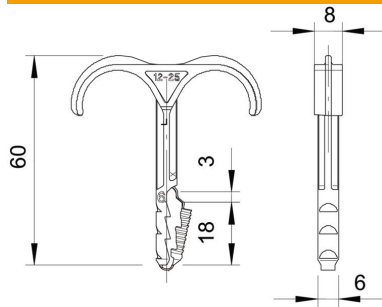
# Technical data sheet

## Double push-fit clip

Item number: 2197863



### Dimensions



### Technical data

Number of cables/pipes	2
Version for	Two-lobe
Fastening type	Plug fastening
Drill hole depth	40 mm
Drill hole diameter, min.	6 mm
Breaking load for concrete B25	120 N
Halogen-free	yes
Clamping range D, max.	25 mm
Clamping range D, min.	12 mm