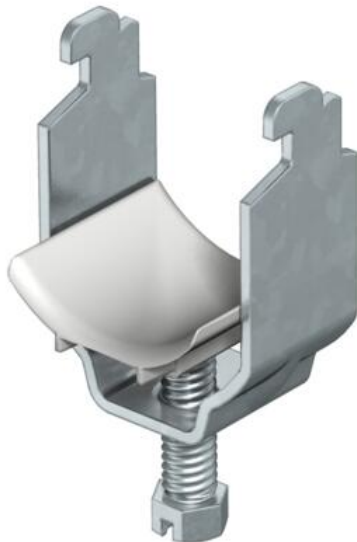


Technical data sheet

Clamp clip, single, plastic pressure trough, FT

Item number: 1163582



Suitable for all C profile rails with slot width 11–12 mm; at least 6.5 mm clear internal height and at least 18.5 mm clear internal width.
Clip and bolt made of hot-dip galvanised steel.
Polypropylene pressure trough, halogen-free, colour light grey RAL 7035.
Version with welding and/or locknuts for use under difficult circumstances and for shake protection on request.



St

Steel

FT

Hot-dip galvanised

Master data

| | |
|-----------------------------------|-------------------------|
| Item number | 1163582 |
| Description 1 | Clamp clip |
| Manufacturer | OBO |
| Dimension | 52-58mm |
| Material | Steel |
| Surface | Hot-dip galvanised |
| Surface standard | DIN EN ISO 1461 |
| Smallest sales unit | 50 |
| Unit of quantity | Piece |
| Weight | 10.56 kg |
| Weight unit | kg/100 pc. |
| CO Footprint (GWP) Cradle-to-Gate | 0,2246 kg COe / 1 Piece |

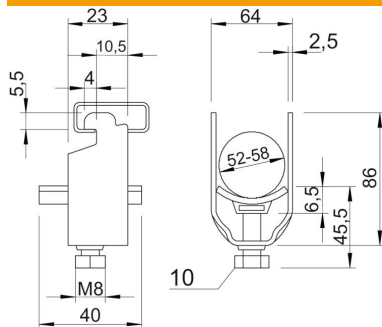
Technical data sheet

Clamp clip, single, plastic pressure trough, FT

Item number: 1163582



Dimensions



| | |
|------------------|---------|
| Dimension A | 23 mm |
| Dimension B | 64 mm |
| Dimension C | 40 mm |
| Dimension G (mm) | M8 |
| Dimension H | 86 mm |
| Dimension L | 45.5 mm |
| Dimension t | 2.5 mm |
| Dimension x | 6.5 mm |

Technical data

| | |
|------------------------------------------------|----------------|
| Number of cables/pipes | 1 |
| for 1 cable H | 86 mm |
| for 1 cable L | 45.5 |
| for 2 cable H | 150 mm |
| for 2 cable L | 57.5 mm |
| For pipe diameter, max. | 50 mm |
| For pipe diameter, min. | 50 mm |
| for rail with slot width (with interval), max. | 12 mm |
| for rail with slot width (with interval), min. | 11 mm |
| Halogen-free | yes |
| Max. Tightening torque | 5 Nm |
| With plastic trough | yes |
| With metal trough | no |
| Mounting type | Profile rail |
| Impact-resistant | no |
| Clamping range D, max. | 58 mm |
| Clamping range D, min. | 52 mm |
| Surface addition | hot galvanised |
| Material addition | Steel |
| With counter-trough | no |
| Material of trough | Plastic |
| Material quality of trough | Polypropylene |