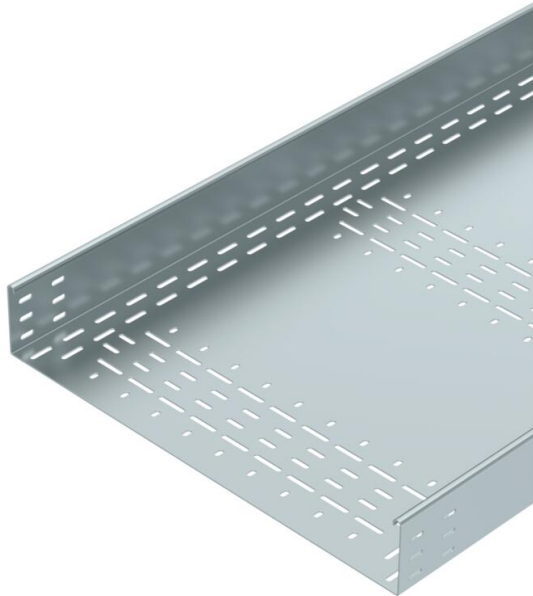


# Technical data sheet

## Cable tray BKRS 100 FS

Item number: 6062010



Heavy-duty, walkable cable tray system BKRS with base perforation, in 100 mm side height.  
The cable tray has connector perforations on both sides.  
Straight connectors should be ordered separately and in the appropriate quantity.  
Magnetic shield insulation without cover 20 dB, with cover 50 dB.



St	Steel
FS	Strip galvanized

### Master data

Item number	6062010
Type	BKRS 1060 FS
Description 1	Cable tray BKRS
Description 2	walkable
Manufacturer	OBO
Dimension	100x600x3000
Colour	zinc
Material	Steel
Surface	Strip galvanized
Surface standard	DIN EN 10346
Smallest sales unit	3
Unit of quantity	Metre
Weight	1201.4 kg
Weight unit	kg/100 m
CO Footprint (GWP) Cradle-to-Gate	29,4514 kg COe / 1 Meter

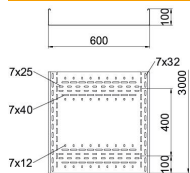
# Technical data sheet

## Cable tray BKRS 100 FS

Item number: 6062010



### Dimensions



Length	3,000 mm
Length	10 ft
Width	600 mm
Width	24 in
Height	100 mm
Height	4 in
Plate thickness	0.08 in
Plate thickness	2 mm
Dimension B	600 mm
Dimension H	100 mm
Dimension L	3,000 mm

### Technical data

Connector version	Without connectors
Mounting system fastening type	Floor
Walkable	yes
Maintain electrical functions	no
With cover	no
Mounting perforation in base	yes
NATO hole pattern	no
Usable cross-section	519 cm <sup>2</sup>
Usable cross-section	51852 mm <sup>2</sup>
Rustproof steel, pickled	no
Side perforation	no
Wide-span version	no
Load test type according to IEC 61537	Type II
Type of connector, cable support system	Screwed