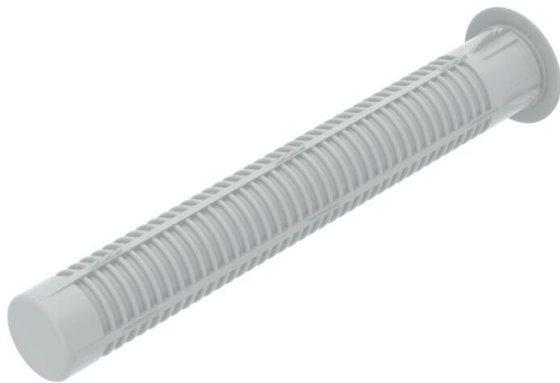


# Technical data sheet

## Plastic perforated sleeve

Item number: 7205240



The plastic wire sleeve is a supplement to the anchor rod or internal thread sleeve and is used to install components on masonry.

The plastic perforated sleeve VM-SH 12x80 is mounted using the anchor rod VMU-A 8x110.

The plastic perforated sleeve VM-SH 16x85 is mounted with the anchor rods VMU-A 10-130 and VMU-A 10-150 or with the internal threaded sleeve VMU-IG M6x80.

The plastic perforated sleeve VM-SH 16x130 is mounted using the anchor rod VMU-A 10-150.

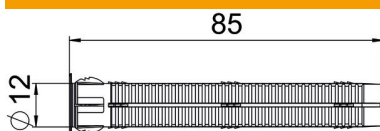
The plastic perforated sleeve VM-SH 20x85 is mounted using the anchor rod VMU-A 12x155 or the internal threaded sleeves VMU-IG M8x80 and VMU-IG M10x80.

**PP/PE** Polypropylene/polyethylene

### Master data

Item number	7205240
Type	FIS H 12x85 K
Description 1	Anchor sleeve
Description 2	for perforated bricks
Manufacturer	OBO
Dimension	85 x 17
Colour	Beige; RAL 1001
Material	Polypropylene/polyethylene
Smallest sales unit	10
Unit of quantity	Piece
Weight	0.17 kg
Weight unit	kg/100 pc.

### Dimensions



Length	85 mm
Dimension D	12 mm
Dimension L	85 mm

# Technical data sheet

## Plastic perforated sleeve

Item number: 7205240



### Technical data

Version for	For pushing in
Drill hole depth	95 mm
Drill hole diameter, max.	12 mm
With flange	yes