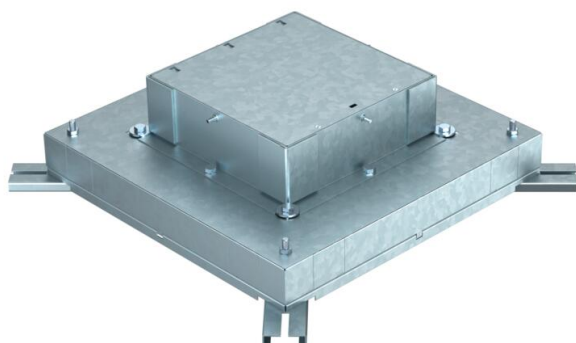


Technical data sheet

In-concrete box for installation units of nominal size 9

Item number: 7399850



In-concrete box for duct height 38 mm, prepared for duct widths 250 and 350 mm.

With four adjustable placements for height-adjustment units.

The integrated lined body can be adjusted to a maximum of 65 mm for compensating screed work.



| | |
|-----------|------------------|
| St | Steel |
| FS | Strip galvanized |

Master data

| | |
|------------------------------------|--------------------------|
| Item number | 7399850 |
| Type | IBD 35038 9 |
| Description 1 | In-concrete box |
| Description 2 | for GES9 |
| Manufacturer | OBO |
| Dimension | 440x440x135 |
| Material | Steel |
| Surface | Strip galvanized |
| Surface standard | DIN EN 10346 |
| Smallest sales unit | 1 |
| Unit of quantity | Piece |
| Weight | 850 kg |
| Weight unit | kg/100 pc. |
| CO2 Footprint (GWP) Cradle-to-Gate | 29,2908 kg COe / 1 Piece |

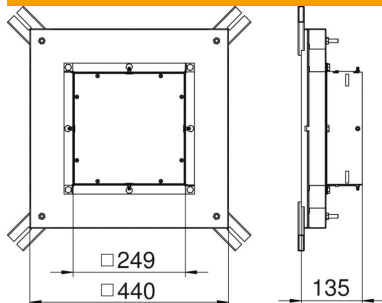
Technical data sheet

In-concrete box for installation units of nominal size 9

Item number: 7399850



Dimensions



| | |
|-------------|--------|
| Height | 135 mm |
| Dimension h | 135 mm |

Technical data

| | |
|---|--------|
| Number of installable devices | 12 |
| Floor plate | yes |
| Seal installation option | no |
| Installation opening for on-floor tank | no |
| Installation opening for flush-mount unit | Square |
| Decouplable | no |
| For pipe connection | no |
| Suitable for screed-flush closed underfloor ducts | no |
| Suitable for screed-covered underfloor ducts | yes |
| Suitable for underfloor ducts | yes |
| Trunking width, max. | 350 mm |
| Trunking width, min. | 250 mm |
| Duct height, min. | 38 mm |
| Nominal size for device installation units | 9 |