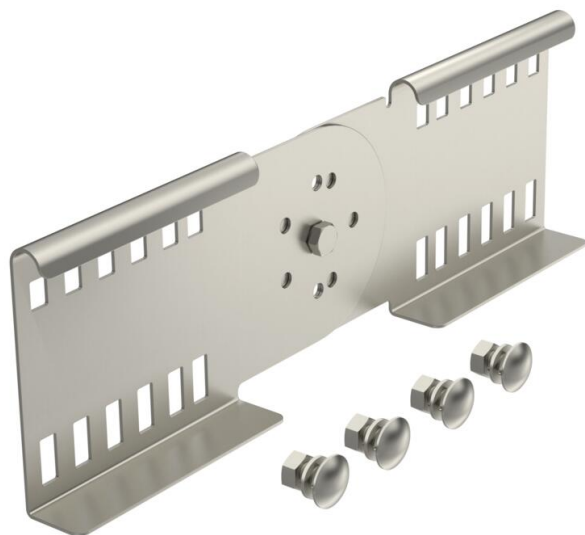


# Technical data sheet

## Articulated connector 110 A2

Item number: 6216648



Adjustable connector as internal connector to join cable ladders and fittings with a side height of 110 mm. Angle can be adjusted vertically.

The bolt fastening ensures the continuity of the equipotential bonding.



**A2** Stainless steel

**2B** Bright, treated

### Master data

Item number	6216648
Type	LGVG 110 A2
Description 1	Adjustable connector
Description 2	for cable ladder
Manufacturer	OBO
Dimension	114x360
Colour	stainless steel
Material	Stainless steel
Surface	Bright, treated
Surface standard	
Smallest sales unit	10
Unit of quantity	Piece
Weight	77.4 kg
Weight unit	kg/100 pc.

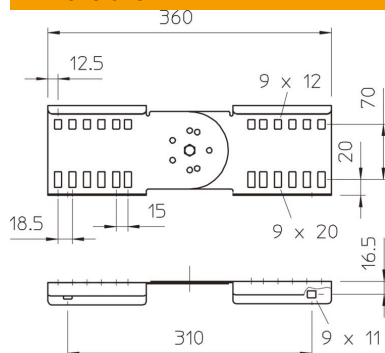
# Technical data sheet

## Articulated connector 110 A2

Item number: 6216648



### Dimensions



Dimension	114x360
Length	360 mm
Width	28 mm
Height	110 mm
Plate thickness	1.5 mm

### Technical data

Version for	Straight and angle connector
Suitable for mesh cable tray	no
Suitable for cable ladder	yes
Suitable for cable tray	no
Suitable for cable tray system height	110 mm
Adjustable connector, horizontal	no
Articulated connector, vertical	yes
Rustproof steel, pickled	no
Connection type	Screw connector