

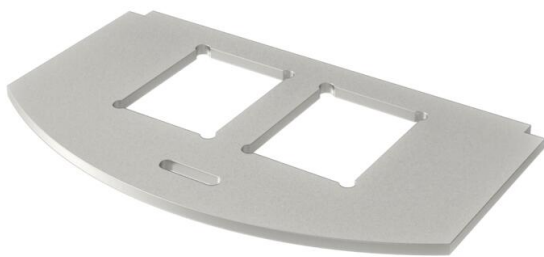
# Technical data sheet

## Mounting plate for data technology, type C

Item number: 7408806



Mounting plate to accept two data connection modules of the following types:  
Brand-Rex: shielded; EKU: E-Stone; Dätwyler: KS-T, MS-K and KU-T module;  
R&M: Snap-In and Keystone; Rutenbeck: UM and UMflex; SETEC: MKJ, UKJ  
and XKJ; Siemon TERA; Telegärtner: AMJ and UMJ.  
Dimensions of a mounting opening in mm: 19.30 x 14.80.

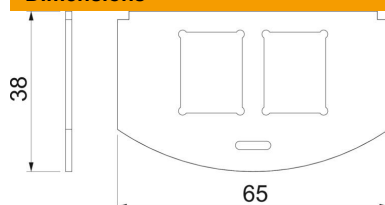


A2 Stainless steel

### Master data

Item number	7408806
Type	MP R2 2C
Description 1	Mounting plate for GES R2
Description 2	for 2x Typ C
Manufacturer	OBO
Material	Stainless steel
Smallest sales unit	1
Unit of quantity	Piece
Weight	1.95 kg
Weight unit	kg/100 pc.
CO2 Footprint (GWP) Cradle-to-Gate	0,265 kg COe / 1 Piece

### Dimensions



Length	65 mm
Width	36 mm

# Technical data sheet

## Mounting plate for data technology, type C

Item number: 7408806



### Technical data

Application	Mounting box
Number of CEE/Perilex openings	0
Number of triple openings	0
Number of installable devices	2
Number of single openings	2
Number of oval openings	0
Number of square openings	0
Number of round openings	0
Number of double openings	0
Fastening type	Lockable
Labelling panel	no
Blanking lid	no
Suitable for labelling panel	no
Device type	Data technology
Installation technology	Miscellaneous
suitable for data connection module	Type C