

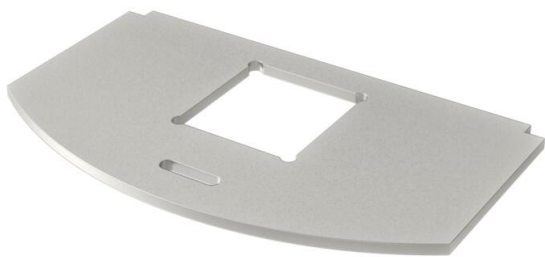
Technical data sheet

Mounting plate for data technology, type LE

Item number: 7408810

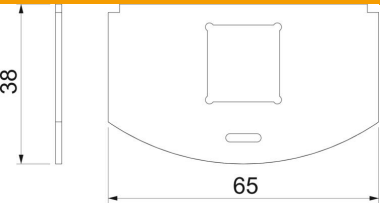


Mounting support to accept two data connection modules of the following types:
LexCom 125 and 250.
Dimensions of a mounting opening in mm: 18.30 x 17.20.



A2 Stainless steel

| Master data | | |
|------------------------------------|---------------------------|--|
| Item number | 7408810 | |
| Type | MP R2 LE | |
| Description 1 | Mounting plate for GES R2 | |
| Description 2 | for 1x Typ LE | |
| Manufacturer | OBO | |
| Material | Stainless steel | |
| Smallest sales unit | 1 | |
| Unit of quantity | Piece | |
| Weight | 2.25 kg | |
| Weight unit | kg/100 pc. | |
| CO2 Footprint (GWP) Cradle-to-Gate | 0,2058 kg CO2e / 1 Piece | |

| Dimensions | | |
|---|--------|-------|
|  | Length | 65 mm |
| | Width | 36 mm |

Technical data sheet

Mounting plate for data technology, type LE

Item number: 7408810



Technical data

| | |
|-------------------------------------|-----------------|
| Application | Mounting box |
| Number of CEE/Perilex openings | 0 |
| Number of triple openings | 0 |
| Number of installable devices | 1 |
| Number of single openings | 1 |
| Number of oval openings | 0 |
| Number of square openings | 0 |
| Number of round openings | 0 |
| Number of double openings | 0 |
| Fastening type | Lockable |
| Labelling panel | no |
| Blanking lid | no |
| Suitable for labelling panel | no |
| Device type | Data technology |
| Installation technology | Miscellaneous |
| suitable for data connection module | Type LE |