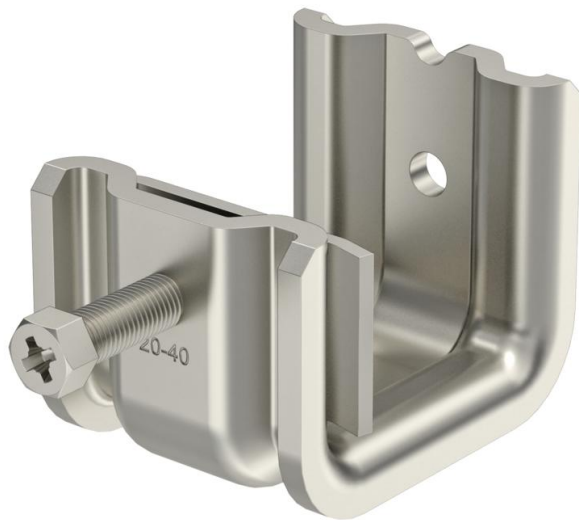


# Technical data sheet

## Beam clamp SSP 20-40, VA M8

Item number: 1486292



This type of support clamp is pushed onto the support and fixed to the girder or flat iron using a pressure trough and bolt (M8). The hexagonal bolt has a WAF of 10 mm. In the clip element also two more M8 threads are introduced, for example to attach threaded rods.



A2	Stainless steel
2B	Bright, treated

### Master data

Item number	1486292
Description 1	Beam clamp
Description 2	heavyweight design
Manufacturer	OBO
Dimension	20-40mm
Material	Stainless steel
Surface	Bright, treated
Surface standard	
Smallest sales unit	25
Unit of quantity	Piece
Weight	27.8 kg
Weight unit	kg/100 pc.
CO Footprint (GWP) Cradle-to-Gate	1,3152 kg COe / 1 Piece

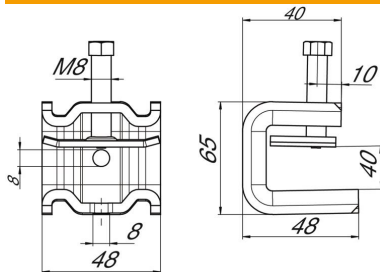
# Technical data sheet

## Beam clamp SSP 20-40, VA M8

Item number: 1486292



### Dimensions



Dimension B	48 mm
Dimension H	65 mm
Dimension L	47 mm

### Technical data

Connection type/component	Thread
Fastening type	Clamp
Breaking load F1	1.4 kN
Breaking load F2	1.3 kN
Flange thickness F max.	40 mm
Flange thickness F min.	20 mm
Suitable for metric threaded rod	8
Thread	M8
Thread metric	8
Hinge, adjustable	no
Hinged	no