

Technical data sheet

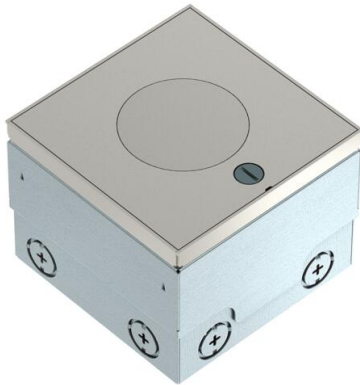
UDHOME2 floor socket, with tube body, unequipped, stainless steel

Item number: 7427097



Square installation unit for use in dry and wet-cleaned cavity and screed floors. Installation housing with pre-marked insertion openings for pipes (M25). Cover adjustable to top edge of floor covering using four height-adjustment supports. The minimum installation depth is 110 mm, the height-adjustment range +25 mm.

Up to two Modul45® sockets can be installed. Up to two modular data sockets (Keystones) can be installed with optional mounting supports. The load-bearing capacity of 15 kN is only guaranteed when in an unused state.



A2 Stainless steel

Master data

Item number	7427097
Type	UDHOME2 VT2
Description 1	Floor socket
Description 2	with tube body, unequipped
Manufacturer	OBO
Dimension	140x140x110
Material	Stainless steel
Smallest sales unit	1
Unit of quantity	Piece
Weight	297 kg
Weight unit	kg/100 pc.
CO2 Footprint (GWP) Cradle-to-Gate	16,1253 kg COe / 1 Piece

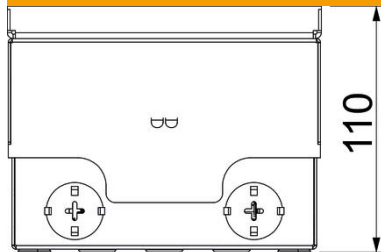
Technical data sheet

UDHOME2 floor socket, with tube body, unequipped, stainless steel

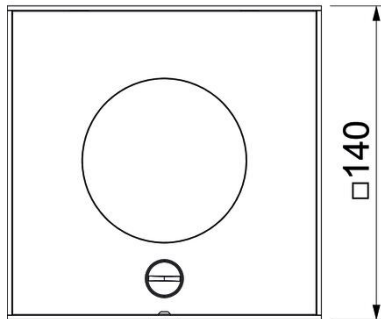
Item number: 7427097



Dimensions



Length	140 mm
Width	140 mm



Technical data

Number of mounting boxes	0
Version for	Square
Cable outlet version	Lowerable tube body
Equipment	Empty housing
Floor covering protection frame	no
Floor care	Wet
Cover version	Decorative plate
Seal installation option	yes
Floor height, max.	135 mm
Floor height, min.	110 mm
Suitable for raised floor installation	yes
Suitable for cavity floor installation	yes
Suitable for wet care	yes
Suitable for underfloor ducts	yes
Device support to accept mounting boxes	no
Length of external dimensions	140 mm
Length of installation dimensions	140 mm
With floor covering recess	no
Protection rating (IP) when used	IP20
Protection rating (IP) when unused	IP45
Protection rating IK code	IK10
Vertical load, large area	to 15,000 N

Technical data sheet

UDHOME2 floor socket, with tube body, unequipped, stainless steel

Item number: 7427097



Technical data

Vertical load, small area	to 3,000 N
Opening mechanism	Sash lock