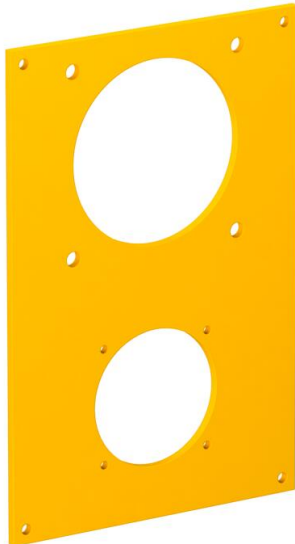


Technical data sheet

Cover plate VHF, for 1x surface-mounted socket, type ASD
and 1x CEE connection unit
Item number: 6109858



Cover plate with a Ø 45 mm opening for the installation of one extension socket (type ASD-...) with 38 mm fastening track and a Ø 60 mm opening for the installation of one CEE socket 16/32 A with 60 mm fastening track, including 8 screws for fastening the device.



PVC Polyvinylchloride

Master data

| | |
|---------------------|--------------------------------|
| Item number | 6109858 |
| Description 1 | Cover plate |
| Description 2 | CEE+surface-mnt'd.socket 38x38 |
| Manufacturer | OBO |
| Dimension | 166x105mm |
| Colour | Rape yellow; RAL 1021 |
| Material | Polyvinylchloride |
| Smallest sales unit | 1 |
| Unit of quantity | Piece |
| Weight | 7.4 kg |
| Weight unit | kg/100 pc. |

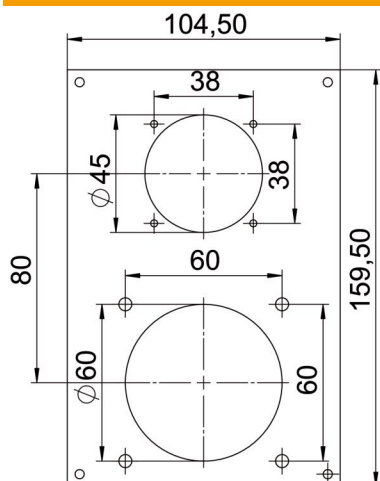
Technical data sheet

Cover plate VHF, for 1x surface-mounted socket, type ASD
and 1x CEE connection unit

Item number: 6109858



Dimensions



| | |
|--------|----------|
| Length | 159.5 mm |
| Width | 104.5 mm |
| Height | 3 mm |

Technical data

| | |
|-------------------------|---------------|
| Number of units | 2 |
| Opening shape | Round |
| Fastening type | Screw-on |
| Blanking lid | no |
| Halogen-free | no |
| Installation technology | Miscellaneous |
| Protection rating | IP20 |