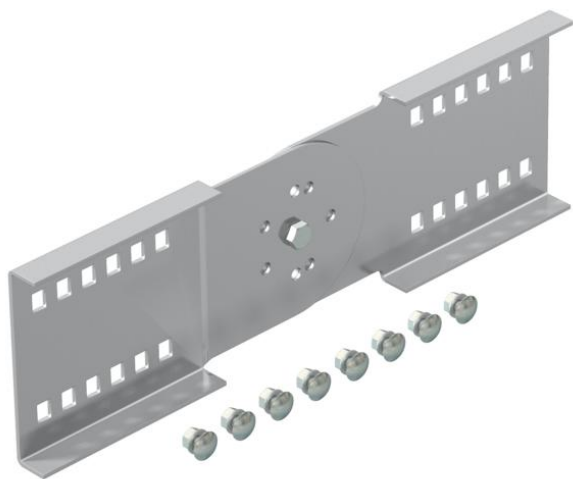


Technical data sheet

Adjustable connector A2

Item number: 6091338

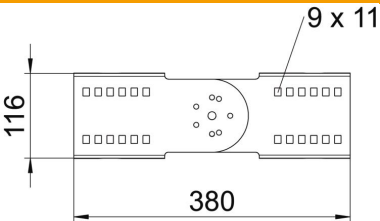


Adjustable connector for wide span cable trays and ladders with a side height of 110 mm.
Including appropriate bolts, washers and nuts.



A2	Stainless steel
2B	Bright, treated

Master data		
Item number	6091338	
Description 1	Adjustable connector	
Description 2	for wide span system 110	
Manufacturer	OBO	
Dimension	110x380	
Colour	stainless steel	
Material	Stainless steel	
Surface	Bright, treated	
Surface standard		
Smallest sales unit	2	
Unit of quantity	Piece	
Weight	120 kg	
Weight unit	kg/100 pc.	

Dimensions		
	Length	380 mm
	Width	20 mm
	Height	110 mm
	Plate thickness	2.5 mm

Technical data sheet

Adjustable connector A2

Item number: 6091338



Technical data

Version for	Straight connector
Maintain electrical functions	no
Suitable for mesh cable tray	no
Suitable for cable ladder	yes
Suitable for cable tray	yes
Suitable for cable tray system height	110 mm
Adjustable connector, horizontal	no
Articulated connector, vertical	yes
Rustproof steel, pickled	no
Connection type	Screw connector