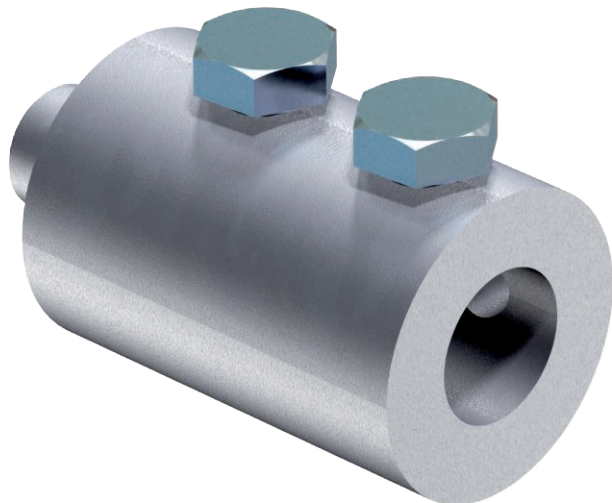


Technical data sheet

Connection piece

Item no. 5408350



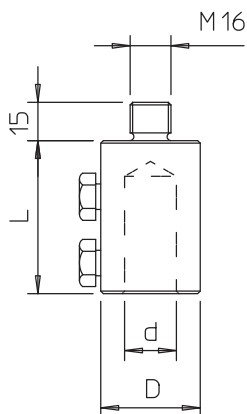
- Fitting with M16 thread
- For mounting on stands with M16 female thread such as type 101 (5402891,5402958)
- With M10 bolts

Alu Aluminium

Master data

Item no.	5408350
Type	101 A-M16
Description 1	Connection piece
Dimension	M16
Material	Aluminium
Material symbol	Alu
Smallest sales unit (VG)	10 Piece
Weight	20,00 kg/100 pc.

Technical data



Length	60,00 mm
Dimension D	40,00 Ø mm
Dimension D Ø	20,00 mm
Dimension L	60,00 mm
Connection	Round conductor
Earthing and lightning protection version	Other